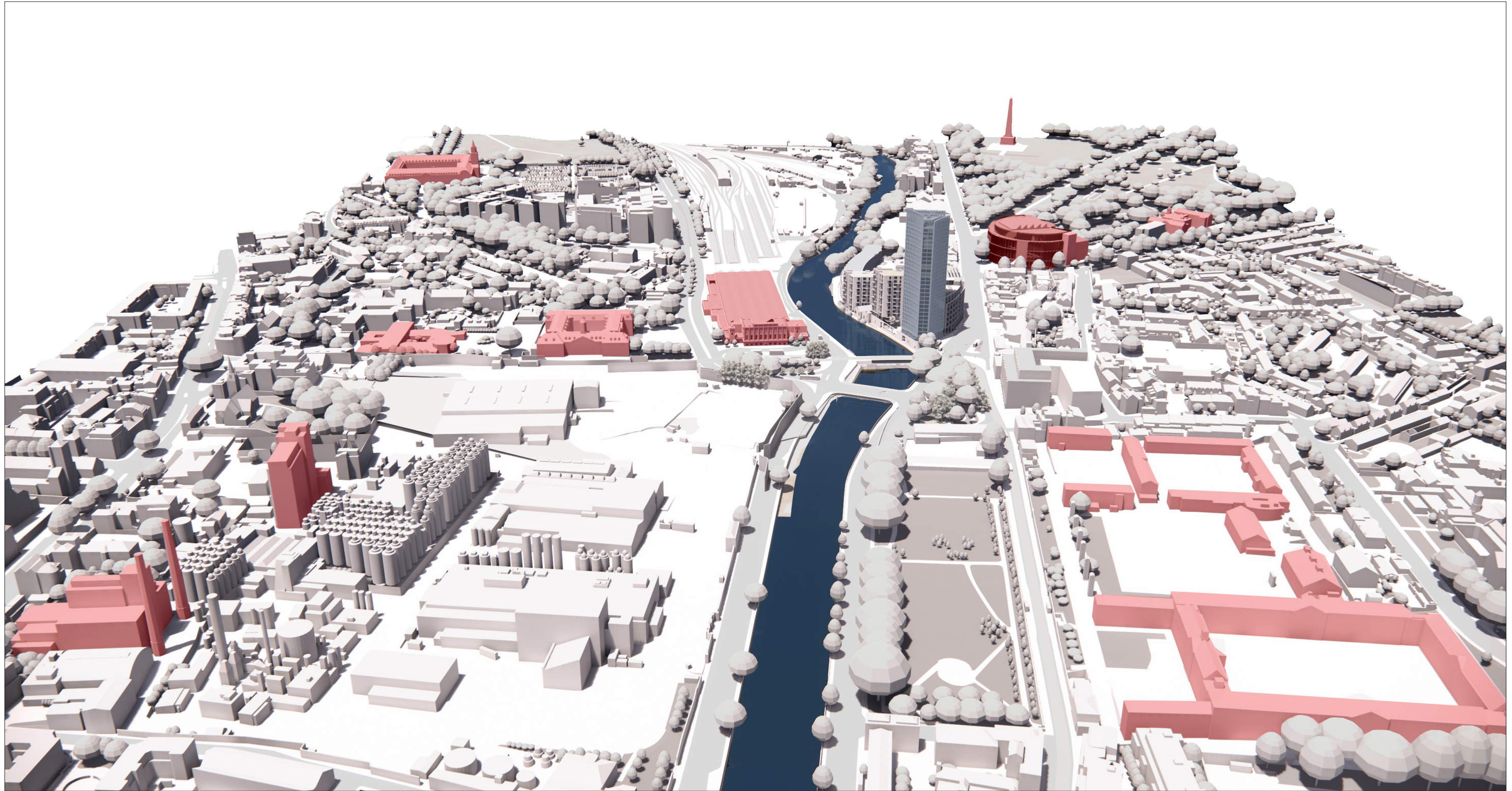


CHAPTER 13 • LANDSCAPE AND VISUAL IMPACT ASSESSMENT • APPENDIX 2
Aerial Views • Context Sections • Axonometric Views • Computer Generated Images (CGIs)



AERIAL VIEW LOOKING WEST ALONG THE RIVER LIFFEY • SHOWING THE PROPOSED DEVELOPMENT SHADED BLUE AND IMPORTANT INSTITUTIONS HIGHLIGHTED IN PINK

The site of the proposed residential landmark building is on low ground at the fulcrum of a set nationally important institutions that include: Heuston Station, Dr Steeven's Hospital (HSE), St Patricks' Hospital, The Royal Hospital Kilmainham, The Phoenix Park, The Wellington Monument, The Royal Infirmary (Department of Defence), The Criminal Courts of Justice, Collins Barracks (National Museum), and the Guinness Brewery.



CROSS SECTION THROUGH THE RIVER LIFFEY

Looking West



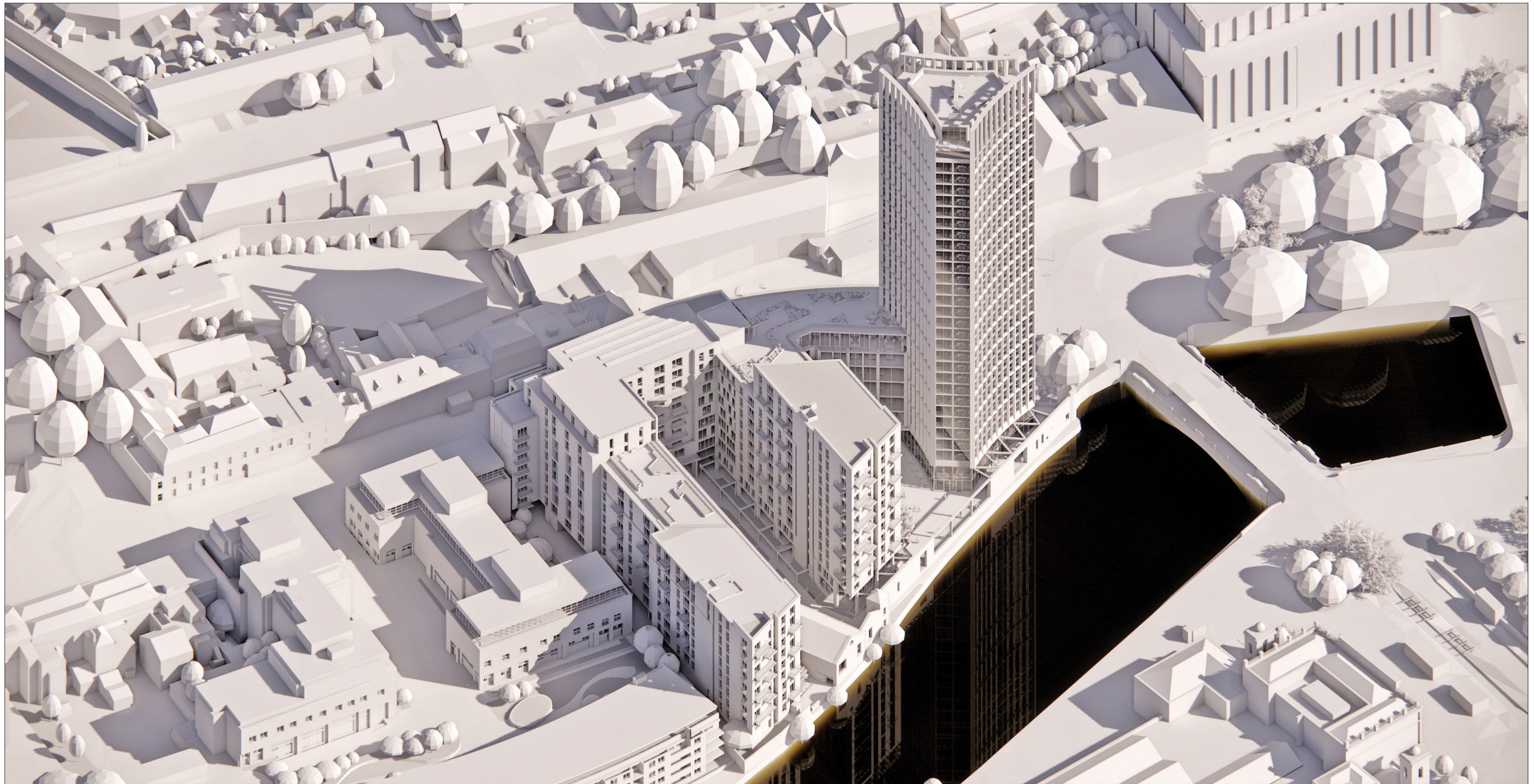
LONG SECTION THROUGH THE RIVER LIFFEY

Looking North



AXONOMETRIC VIEW FROM THE SOUTH EAST

Looking North



AXONOMETRIC VIEW FROM THE SOUTH WEST

Looking North



COMPUTER GENERATED IMAGE OF THE PROPOSED DEVELOPMENT • DUSK
Seen in the context of the approved parts of the 42A Parkgate Street Scheme



COMPUTER GENERATED IMAGE OF THE PROPOSED DEVELOPMENT • DAYTIME
Seen in the context of the approved parts of the 42A Parkgate Street Scheme



COMPUTER GENERATED IMAGE OF THE PROPOSED DEVELOPMENT • DUSK
Seen behind the James Joyce Bridge